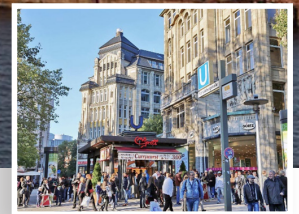




CASE STUDY WILHELM.TEL



Integration of Hamburg's HOCHBAHN buses with the ituma platform

wilhelm.tel GmbH operates a comprehensive high-speed broadband telecommunications network in Norderstedt. In Hamburg, the company is present through its partnership with the housing association SAGA GWG and operates the Hamburg fibre-optic network together with its partner willy.tel. In cooperation with HOCHBAHN, all buses and the 92 underground stations have been equipped with high-speed internet access in recent months.

Quote from www.hochbahn.de:

“Hamburger Hochbahn AG (HOCHBAHN) and the MobyKlick provider, wilhelm.tel GmbH, have completed the project to expand free Wi-Fi with the installation of access points at all 92 underground stations. The HOCHBAHN bus fleet has been equipped with MobyKlick's Wi-Fi service since the start of the year. The installation at the underground stations has now also been completed – completion was originally scheduled for the end of the year.”

Development of the advanced authorisation and management platform by ituma

WilhelmTel/MobyKlick has been using ituma's Managed WLAN Solution Platform for the Hamburg metropolitan region's free Wi-Fi network since 2017. The platform

comprises a three-tier client system (client, reseller, customer) with a web login portal, RADIUS/DHCP server, scalable Wi-Fi gateway and reporting functionality (system utilisation, user numbers, average session duration, volume/bandwidth usage per user). User and login data are handled separately from user traffic.

This latest update enables the NetModules installed in Hochbahn buses to be connected to the Mobyklick infrastructure. It ensures separate monitoring of data traffic from devices connected to Hochbahn, enables customer and voucher management via the Cockpit, and implements a zone profile specific to Hochbahn, featuring bandwidth limits, volume limits and a fixed reset time.

Partner:  

ituma